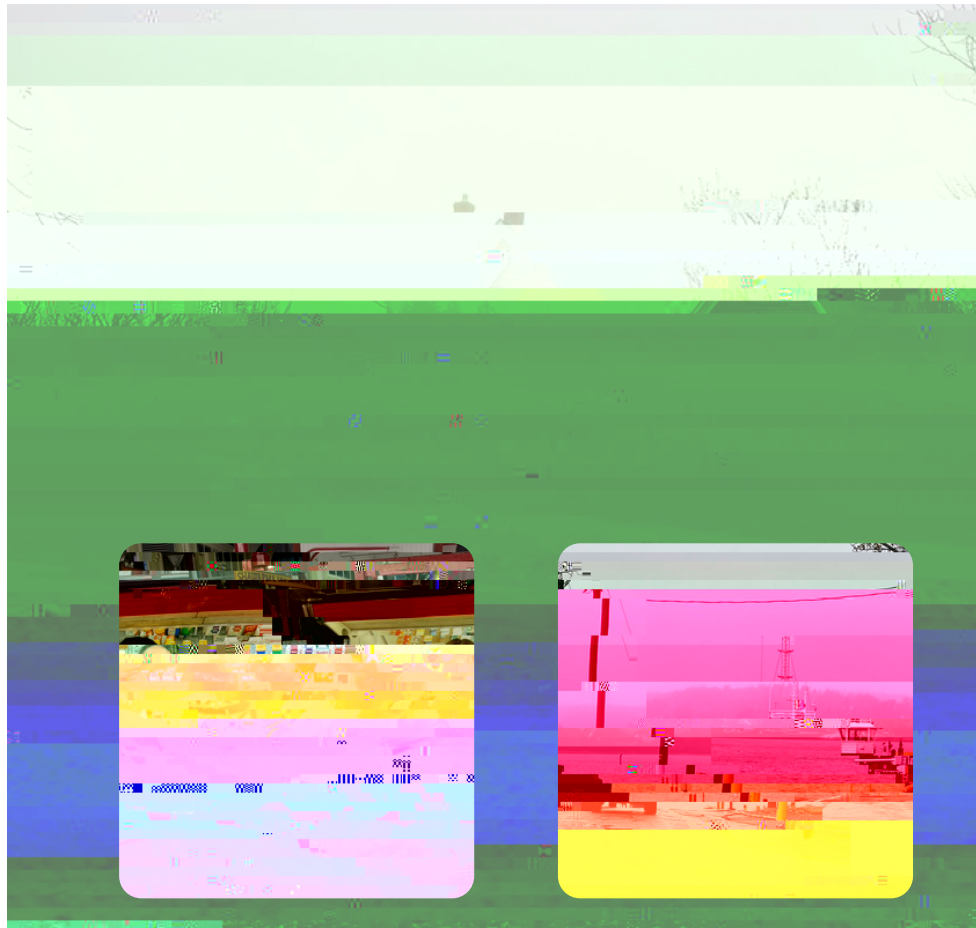


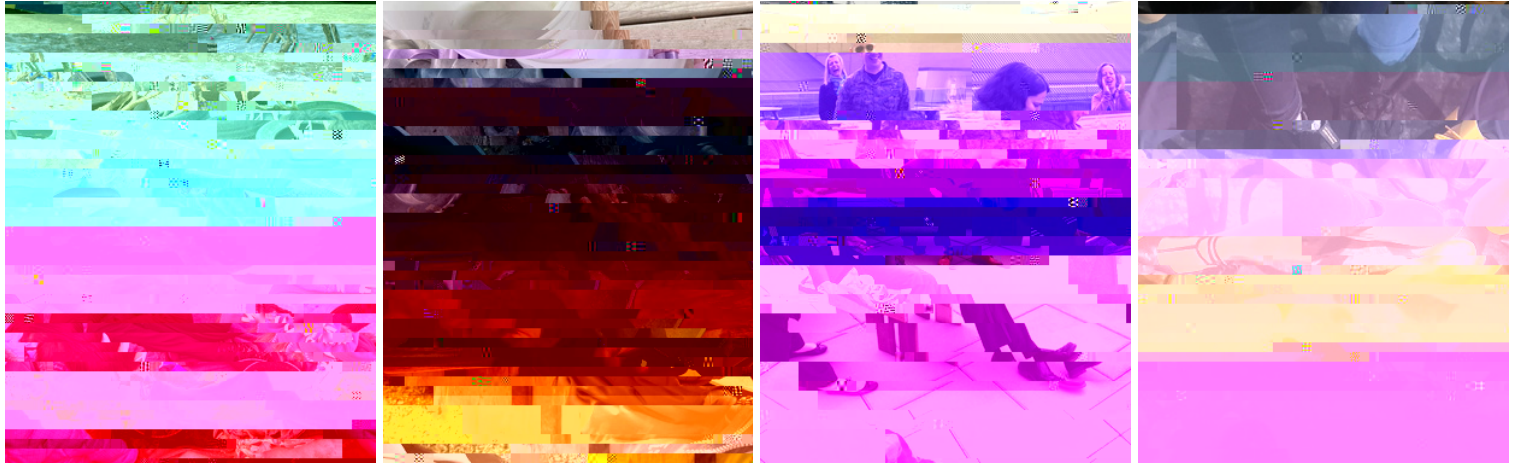
# Leda O'DONOGHUE

BOW VALLEY COLLEGE, CALGARY, AB

External evaluation is any process in which an organization, institution or group is examined by evaluating a person who is not part of those human groups. That is, it is the evaluation carried out by a person outside a group of people in order to have the least biased assessment of it.

O d Peda  
P ee -E a  
E a a Ne  
B c





## THE CONVERSATIONS

I WAS ASKED ABOUT ...

•

